

**REPORT OF  
NOISE MONITORING AT COWDEN  
JULY 2014 TO JUNE 2016**

Client: Gatwick Airport Limited



Report Author : .....  
Dr R. Peters  
Principal Consultant



Approved by : .....  
A.V.H. Holdich  
Executive Consultant

© Applied Acoustic Design 2017



This document has been prepared by AAD Ltd for the sole use of our client and in accordance with generally accepted consultancy principles, the budget for fees and the terms of reference agreed between AAD and the Client. Unless otherwise expressly stated in this document, any information provided by third parties and referred to herein has not been checked or verified by AAD. No third party may rely on this document without the prior and express written agreement of AAD.

THE GREEN BUSINESS CENTRE  
THE CAUSEWAY  
STAINES  
MIDDLESEX  
TW18 3AL

TELEPHONE: 01784 464404  
FACSIMILE: 01784 465447  
E MAIL: mail@aad.co.uk

## CONTENTS

1.0	Introduction	3
2.0	The data from the Noise Monitoring Terminal	3
2.1	Data validity checks	3
3.0	Analysis of Noise Monitoring Survey Results	4
3.1	The numbers of aircraft noise events	4
3.2	Maximum noise levels of aircraft noise events	5
3.3	Aircraft altitudes	5
3.4	The Total noise climate at the site	5
4.0	Putting the noise climate at the site into a wider UK context	7
4.1	Aircraft noise contours	7
4.2	The National Noise Incidence Survey	8
4.3	World Health Organization Guidance on Community Noise	8
5.0	Aircraft types contributing to the aircraft noise level at the site	9
6.0	Summary and Conclusions	13
	Figures 1 – 16	15 - 24
	Appendix 1: Data from the Noise monitoring Terminal	
	Appendix 2: Glossary of Acoustic terms	

## 1.0 Introduction

A mobile Noise Monitoring Terminal (NMT) has been deployed at Cowden in Kent by Gatwick Airport Ltd from 2 July 2014 to 30 June 2016. This report presents a summary of the results of continuous noise monitoring for the 24 month period which covers two complete seasonal cycles of aircraft movements.

The following information about the site derives from the observations of the AAD Field Engineer who visited the site during the noise monitoring period, at approximately monthly intervals, to download data, carry out calibration checks and routine maintenance as required. The NMT at Cowden is located in the edge of a field, which during the early part of the monitoring period contained crops, but then remained fallow, and there are no cattle, but occasional dog walkers. The site is out of earshot of the nearest main road but there is a drive (a private road), to a house, stables and business premises, which runs alongside the field (about 15 m away) along which there are occasional vehicles passing. On the basis of this information this would appear to be a very quiet site where, apart from the noise from passing aircraft, birdsong in summer is the only sound which is regularly heard. However, as with all unattended noise monitoring sites there can be periods when higher than usual noise levels are recorded, for example during periods of adverse weather conditions such as heavy rain and high winds.

## 2.0 The noise data from the noise monitoring terminal

The Noise Monitoring Terminal (NMT) gathers data about the number and level of aircraft noise events. Aircraft noise events are bursts of noise which activate the trigger condition, discussed below, and which also correlate with radar tracks from the airport's noise and track keeping system. In addition the NMT also gathers data about the total level of noise at the site, on an hourly basis. The hourly values of total noise are a combination of the noise from the aircraft noise events and from all other noise sources, called residual noise.

The monitor trigger condition was set to operate with a threshold trigger level of 55 dBA to be exceeded for 10 seconds.

Figures 1 and 2 (pages 13 and 14) show the location of the NMT at Cowden and typical aircraft tracks, indicating that aircraft overflying the site are mainly arrivals from the east and departures to the east. Some aircraft departing to the west on 'wrap-around' routes also overfly the site, but at much greater altitudes.

Further information about the NMT is given in Appendix 1, and a glossary of acoustical terms is given in Appendix 2.

### 2.1 Data validity checks

#### *Aircraft noise event data*

A total of approximately 62,300 aircraft noise events were recorded at the noise monitor during the monitoring period from 2 July 2014 to 30 June 2016. Examination of these data indicated a small but significant number (about 3%) of these events had durations much greater than could be expected from an aircraft pass-by noise event. It is considered that the most likely explanation is that these are noise events triggered by aircraft noise but prolonged by other sources of noise, including noise from the wind which continues long after the aircraft has moved away.

It was decided to remove these 'long-duration' events from the data base to be used for subsequent analysis, using a criterion that events with a duration of more than 60 seconds should be removed. This left a data base of about 60,500 aircraft noise events, over the 24 month period, which are the subject of the analysis presented in this report.

#### *Hourly total noise level data*

Perusal of these data showed that there were many hours for which the hourly average level of total noise at the site was unexpectedly high, with hourly noise levels of over 65 dBA and up to 85 dBA present in the data set, for both daytime and night-time hours. A more detailed examination showed that average total noise levels were usually in the range of between about 48 to 55 dBA in the daytime and between 40 and 50 dBA at night time. Further investigation of a sample of these high levels data showed that they coincided with periods of high wind, well above 5 m/s, and it is considered that these unexpectedly high level of hourly total noise are caused by the effects of wind passing over the microphone. Accordingly it was decided to remove all total average hourly noise levels above 65 dBA from the data set used for subsequent data analysis – just under 2% of the data.

### **3.0 Analysis of noise monitor survey results**

The results are discussed in the following sequence: the number of aircraft noise events recorded by the NMT; maximum noise levels of aircraft noise events; the noise climate at the site, including aircraft noise, total noise and residual noise; putting the noise climate into context; and the contribution of different types of aircraft to the aircraft noise level at the site.

The results of the data gathered during the survey are displayed in Figures 3 to 16 below (pages 15 to 22) and are also summarised in the Table in section 6 of this report (page 12).

#### **3.1 The number of aircraft noise events**

Most of these events arose from aircraft departures (54%), with 40% arising from departures and 6% from overflights. Almost all of the events (93%) occurred during the daytime period (07.00 to 23.00 hours, local time) and 7% at night-time. The number of events recorded during the second 12 months of the monitoring period (July 2015 to June 2016) was about 3% higher than the number recorded in the first 12 months (July 2014 to June 2015).

The number of aircraft noise events recorded by the NMT each month at Cowden during the noise monitoring period will vary month by month depending on the seasonal variation in total number or movements, and the wind direction at the airport, which determines runway usage and take off direction. Figure 3 (page 14) shows the variation of the total number of movements at the airport each month from July 2014 to June 2016. The percentage of westerly runway usage each month over the same period is shown graphically in Figure 4 (page 15) and also in the Table below. Figure 5 (page 16) shows the total number of aircraft noise events recorded by the NMT at Cowden each month from July 2014 to June 2016.

Month	% westerly	% easterly	Month	% westerly	% easterly
July 2014	69	31	July 2015	61	39
August 2014	90	10	August 2015	67	33
September 2014	33	67	September 2015	58	42
October 2014	84	16	October 2015	41	59
November 2014	52	48	November 2015	90	10

## Noise Climate at Cowden, July 2014 to June 2016

December 2014	84	16	December 2015	93	7
January 2015	91	9	January 2016	80	20
February 2015	66	34	February 2016	65	35
March 2015	61	39	March 2016	57	43
April 2015	52	48	April 2016	73	27
May 2015	82	18	May 2016	42	58
June 2015	71	29	June 2016	61	39

Figure 6 and 7 (page 17) show how these monthly total numbers of events are split into those arising from arrivals, departures and overflights for each of the two 12 month periods, although data for numbers of overflights is missing from December 2014 to May 2015. Figures 8 and 9 (page 18) show monthly comparisons of the numbers of arrival and departure events over the two year period.

The number of aircraft noise events varies, hour by hour, throughout each day. Figure 10 (page 19) shows this variation, including the numbers of arrivals, departures and overflights. It can be seen that, on average over the twenty four month period, the highest numbers of aircraft noise events per hour recorded at the site occur in the daytime and evening periods between 07.00 and 23.00 hours, and with the very highest numbers per hour occurring between 07.00 and 08.00, and between 13.00 and 16.00 (local time).

### 3.2 Maximum noise levels and durations of aircraft noise levels

The maximum noise level,  $L_{A\text{Smax}}$ , produced by all aircraft noise events over the 24 month period varied, with an average value of 61 dBA and a standard deviation of 3.5 dBA. More than 98.7% of events had a maximum value of less than 70 dBA.

There was a small difference between the average maximum noise level for arrival events (60 dBA), departure events (62 dBA), and overflights events (60 dBA).

The duration of these aircraft noise events ranged between 10 and 60 seconds, but with an average duration of 25 seconds.

### 3.3 Aircraft altitudes

The average altitudes of the aircraft responsible for the aircraft noise events were: 3460 feet for arrivals, 6512 feet for departures and 12186 feet for overflights. A statistical distribution of altitudes is shown in Figure 11 for arriving aircraft and in Figure 12 for departures (page 20).

### 3.4 The total noise climate at the site

Figure 13 (page 21) shows the month by month average daytime noise levels of aircraft noise. This is the notional level of aircraft noise which would occur if the all the intermittent bursts of aircraft noise were averaged to give a continuous steady level of noise. Although this average noise level bears little relationship to the aircraft noise as heard, which occurs in short bursts of noise at higher levels rather than as a lower continuous average level, it is, nevertheless, a useful parameter for comparative purposes, and is the internationally accepted method for comparing environmental noise.

Also shown in Figure 13 (page 21) are the average monthly levels of total noise and residual noise at the site, and the average monthly values of maximum noise levels of aircraft noise

events, and of background noise ( $L_{AS90}$  values). Figure 14 (page 21) shows similar data for night-time

*Monthly average aircraft noise levels, day and night*

Figure 13 (page 21) shows that the average level of aircraft noise level ( $L_{Aeq}$ ) in the daytime generally varied from month to month between 40 to 50 dBA, with an average value over the monitoring period of 46 dBA.

Figure 14 (page 21) shows that the average level of the night-time aircraft noise level ( $L_{Aeq}$ ) generally varied from month to month between 32 to 42 dBA, with an average value of 39 dBA.

*Monthly average total noise levels, day and night*

Figure 13 (page 21) shows that the average daytime monthly total noise level range between 48 and 52 dBA.

At night-time Figure 14 (page 21) shows that the average night-time monthly total noise level range between 44 and 51 dBA.

*Residual noise levels*

The level of residual noise, as explained in Appendix 1, is deduced from the level of total noise and aircraft noise. Throughout the monitoring period this residual noise level was higher than the levels of aircraft noise, and was usually within 1 or 2 dB of the total noise level.

*Background noise levels*

The daytime background noise level ( $L_{AS90}$ ) varied throughout the 12 month period between about 32 and 42 dBA in the daytime, and between about 25 to 40 dBA at night.

*Maximum aircraft noise levels*

The average of maximum aircraft noise levels each month was similar during the daytime and night time, and always within 1 or 2 dB of the overall average value of 61 dBA.

*Figures 13 and 14: Conclusion*

Figures 13 and 14 (page 21) demonstrate that the noise from aircraft noise events at this site, when cumulatively averaged over an extended period of time (of hours, days or months) makes a significant but not a major contribution to the total noise level at this site, and that noise from other sources, i.e. the residual noise, makes the major contribution.

However each individual aircraft noise event, whenever it occurs, is likely to be clearly audible and distinguishable from the residual noise because, in addition to being different in character, it results in a noticeable increase in the level of noise over the ambient noise level during each event.

### Hour by hour variations in noise levels

Figure 15 (page 22) shows the variation of average levels of aircraft noise, residual noise, background noise and total noise at the site with hour of day. It can be seen that the aircraft noise levels do not vary much during the daytime period (07.00 to 18.00 hours) but fall during the late evening and night-time period, rising again in the early morning. Also shown in Figure 15 (page 21) is the average of maximum aircraft noise levels, which does not vary significantly with hour of day.

Figure 16 (page 22) shows the variation of average and maximum aircraft noise levels at Cowden with hour of day for the two 12 month periods (July 2014 to June 2015, and July 2015 to June 2016). It can be seen that the average (or  $L_{Aeq}$  values) for the first 12 month period are between 1 and 2 dB higher than for the second 12 month period, but there is no significant difference in the average of the maximum ( $L_{ASmax}$ ) values.

The average noise levels (rounded to the nearest dB) over the 24 month period for various parts of the 24 hour day are shown below for the two consecutive 12 month periods:

	Total noise $L_{Aeq,T}$	Aircraft noise $L_{Aeq,T}$	Residual noise $L_{Aeq,T}$	Background noise level ( $L_{AS90}$ )
Day (16h) (07.00 - 23.00 h)	49/49	47/44	45/47	36/39
Night (8h) (23.00 - 07.00 h)	41/42	39/38	40/42	30/31
Day (12 h)* (07.00 - 19.00 h)	50/50	49/46	46/47	37/40
Evening (4 h)* (19.00 - 23.00 h)	47/47	44/43	43/45	32/36
24 hours	47/47	46/43	43/45	34/36.

\* The 12 hour day and 4 hour evening periods have been defined as part of the day evening night noise index,  $L_{den}$ , used for noise mapping purposes (and described later in this report).

## 4.0 Putting the noise climate at the site into a wider UK context

### 4.1 Aircraft noise contours

The site at Cowden lies well outside the lowest noise prediction contour (57 dBA  $L_{Aeq16h}$ ) the shape of which is published by the Civil Aviation Authority on behalf of the Department of Transport (ERCD Report 1402, Noise Exposure Contours for Gatwick Airport 2013). This is consistent with the 12 month average  $L_{Aeq16hour}$  aircraft noise level for this site of 47 dBA for the 12 months from July 2014 to June 2015 and 44 dBA for the following 12 months, as shown in the Table above, which was calculated from data for the two 12 month periods from July 2014 to June 2016. Strictly speaking, because each set of values is based on averages over different time periods and, probably, different modal splits and different mixes of aircraft types, the values obtained from this survey are not directly comparable with the CAA noise contours.

The 57 dBA contour is the lowest contour to be published because in the view of the UK government it denotes the approximate onset of significant daytime community annoyance.

The relationship between noise and annoyance is of course not an exact one, and varies according to situation and locations.

In 2011 aircraft noise contours of day evening night level (Lden) were published for Gatwick Airport (ERCD Report 1205, Strategic Noise Maps for Gatwick Airport 2011). The site at Cowden lies well outside the lowest contour of 55 dB Lden. As explained previously any comparison between an estimate of Lden based on the noise measurements in this report with the Strategic noise mapping contours should recognise that the two sets of values are based on averages over different time periods, and therefore different numbers of aircraft noise events and, probably, different modal splits and different mixes of aircraft types. The Lden value calculated from aircraft noise measurements at this site over the twelve month period from July 2014 to June 2015 has been estimated as 49 dBA, and as 47 dBA for the subsequent 12 month period (July 2015 to June 2016). The Lden value calculated from total noise measurements at this site was estimated as 51 dBA for both of the twelve month periods from July 2014 to June 2015, and 2015 to June 2016.

#### 4.2 The National Noise Incidence survey

National Noise Incidence studies of noise levels in England and Wales were carried out in 1990 and again in 2000 by the Building Research Establishment for Defra. A comparison of the data from the first two studies indicated that although there were some changes, much about the noise climate in England and Wales had not changed significantly over the 10 year period. Therefore the 2000 study remains a good basis for setting the noise levels from this study at Cowden into a wider context. The results of the 2000 study, published in 2001, gave a breakdown of the proportion of UK residents exposed to noise, as follows:

Proportion of the population of England and Wales living in dwellings exposed to daytime noise levels ( $L_{Aeq, 16 \text{ hour}}$ ) in 5 dB bands, in the 2000 National Noise Incidence Study	
5 dB noise exposure level bands*	Proportion in band
Less than 50 dBA	30%
50 dBA < L < 55 dBA	37%
55 dBA < L < 60 dBA	18%
Greater than 60 dBA	15%

\*The noise level exposure bands in the above Table are for 'free field' noise levels, i.e. noise levels unaffected by sound reflections from nearby surfaces. All the noise levels from the NMT at Cowden are also free field values.

The 16 hour  $L_{Aeq}$  value of total noise for this site are 49 dBA for both the two successive 12 month periods of this noise monitoring survey. This puts the site in the lowest, less than 50 dBA noise exposure band, occupied by 30 % of dwellings in the UK.

It should be noted that this comparison refers to the total noise at this particular site at Cowden, which is dominated by residual noise, i.e. noise from sources other than aircraft. The possible sources of noise at the site were described in section 1.0 above.

#### 4.3 World Health Organisation Guidance on Community Noise

In 2000 the World Health Organisation issued 'Guidelines for Community Noise' that "general daytime outdoor noise levels of less than 55 dBA are desirable to prevent significant community annoyance" and that "at night, sound pressure levels at the outside façades of

living spaces should not exceed 45 dB ( $L_{Aeq}$ ) so that people may sleep with bedroom windows open."

The daytime total noise exposure level during the 24 month monitoring period at this site are 49 dBA for both of the two successive 12 month periods, and 41 dBA and 42 dBA for the night-time periods. Therefore both the daytime and night-time noise exposure levels at this site are below the night-time WHO Guidelines of 55 and 45 dBA respectively.

## 5.0 Aircraft types contributing to the aircraft noise level at the site

Approximately 100 different aircraft types contributed to the total number of aircraft noise events which occurred during the monitoring period, but most of the events arose from a relatively small number of aircraft types, with three types being responsible for over 70% of all aircraft noise events at the site:

Airbus Industrie A319: 34.0%

Airbus Industrie A320: 26.8%

Boeing 737 - 800: 14.5%

The Table below lists the 20 aircraft types responsible for more than 95% of all of the aircraft noise events which occurred during the period, showing the number and the % number of events and the average  $L_{Amax}$  value for each aircraft type, presented in order, with the most frequent type at the top of the list.

List of 20 most frequent aircraft types in order of event numbers:

July 2014 to June 2015				July 2015 to June 2016			
a/c type	Number	dB	%	a/c type	Number	dB	%
Airbus Industrie A319	10873	60.2	36.47	Airbus Industrie A319	9649	59.5	31.47
Airbus Industrie A320	7548	60.6	25.32	Airbus Industrie A320	8656	60.0	28.23
Boeing 737-800	4543	62.3	15.24	Boeing 737-800	4238	62.0	13.82
Airbus Industrie A321	1262	61.7	4.23	Airbus Industrie A321	1548	61.1	5.05
Boeing 737-400	929	62.2	3.12	Boeing 737-400	634	62.0	2.07
Boeing 777-200	562	62.1	1.88	Boeing 777-200	435	60.6	1.42
Boeing 757-200	557	61.4	1.87	Boeing 747-400	420	59.0	1.37
Boeing 747-400	444	59.9	1.49	Airbus Industrie A330-300	296	59.1	0.97
Boeing 777	409	62.4	1.37	Boeing 757-200	279	60.5	0.91
Airbus Industrie A330-200	394	60.8	1.32	Airbus Industrie A330-200	257	59.8	0.84

Noise Climate at Cowden, July 2014 to June 2016

Airbus Industrie A380-800	299	62.6	1.00	Boeing 787-800	188	60.7	0.61
unknown	294	59.9	0.99	Boeing 777	177	61.0	0.58
Airbus Industrie A330-300	284	59.8	0.95	Boeing 757-300	163	62.0	0.53
Boeing 757-300	184	62.6	0.62	Boeing 767-300	160	59.8	0.52
Embraer 175	169	61.8	0.57	Boeing 737-300	158	61.6	0.52
Boeing 767-300	155	59.8	0.52	Eurocopter AS355	140	64.0	0.46
Boeing 787-800	143	62.0	0.48	Embraer 175	122	61.2	0.40
Boeing 737-300	141	61.6	0.47	Boeing 737-700	98	61.4	0.32
Boeing 737-900	85	62.3	0.29	Airbus Industrie A310	87	60.4	0.28
Eurocopter AS355	76	63.7	0.25	Augusta Westland AW109	68	68.1	0.22

The Table below shows the same 20 most frequent aircraft types but rearranged in order of decreasing average maximum aircraft noise event level.

July 2014 to June 2015				July 2015 to June 2016			
a/c type	Number	dB	%	a/c type	Number	dB	%
Eurocopter AS355	76	63.7	0.25	A109	68	68.1	0.22
Boeing 757-300	184	62.6	0.62	AS55	140	64.0	0.46
Airbus Industrie A380-800	299	62.6	1.00	A388	634	62.0	2.07
Boeing 777	409	62.4	1.37	Boeing 757-300	163	62.0	0.53
Boeing 737-900	85	62.3	0.29	Boeing 737-800	4238	62.0	13.82
Boeing 737-800	4543	62.3	15.24	Boeing 737-300	158	61.6	0.52
Boeing 737-400	929	62.2	3.12	Boeing 737-700	98	61.4	0.32

Noise Climate at Cowden, July 2014 to June 2016

Boeing 777-200	562	62.1	1.88	Embraer 175	122	61.2	0.40
Boeing 787-800	143	62.0	0.48	Airbus Industrie A321	1548	61.1	5.05
Embraer 175	169	61.8	0.57	Boeing 777	177	61.0	0.58
Airbus Industrie A321	1262	61.7	4.23	Boeing 787-800	188	60.7	0.61
Boeing 737-300	141	61.6	0.47	Boeing 777-200	435	60.6	1.42
Boeing 757-200	557	61.4	1.87	Boeing 757-200	279	60.5	0.91
Airbus Industrie A330-200	394	60.8	1.32	Airbus Industrie A310	87	60.4	0.28
Airbus Industrie A320	7548	60.6	25.32	Airbus Industrie A320	8656	60.0	28.23
Airbus Industrie A319	10873	60.2	36.47	Airbus Industrie A330-200	257	59.8	0.84
Boeing 747-400	444	59.9	1.49	Boeing 767-300	160	59.8	0.52
unknown	294	59.9	0.99	Airbus Industrie A319	9649	59.5	31.47
Boeing 767-300	155	59.8	0.52	Airbus Industrie A330-300	296	59.1	0.97
Airbus Industrie A330-300	284	59.8	0.95	Boeing 747-400	420	59.0	1.37

Finally the Table below shows the 10 aircraft types which produce the highest average  $L_{ASmax}$  noise levels. It can be seen that for most of these the number of aircraft noise events is very small, and several of them are overflights by helicopters and light aircraft. The helicopter activity is not associated with Gatwick Airport.

List of noisiest (highest average  $L_{ASmax}$  value) aircraft types:

July 2014 to June 2015			July 2015 to June 2016		
a/c type	Number	dB	a/c type	Number	dB
Diamond DA40	1	68.6	Agusta 109E	68	68.1
Eurocopter AS365	3	68.4	Boeing 727-100	1	67.9
Agusta 109E	28	67.5	Boeing 747-400	1	67.9
Augusta 119	1	66.7	Eurocopter EC30	2	67.6
Dassault Falcon 7X	1	66.2	Eurocopter EC35	3	67.4
Hughes 369	10	65.8	Jetstream 41	1	67.2
Cessna Citation	1	65.6	Bombardier Challenger 300	3	66.2
Dassault Falcon 900	2	65.4	Raytheon 390 Premier 1	1	66.1
Eurocopter AS355	76	63.7	Cessna Mustang	1	65.4
Dassault Falcon 200	1	62.9	Canadair Regional Jet CRJ100	1	64.8

From these three Tables it can be seen that, the average maximum noise level ( $L_{ASmax}$ ) of aircraft noise events did not vary significantly with aircraft type for the relatively few aircraft types which make up most of the aircraft noise events, and that although there are some aircraft types which produce significantly higher values of  $L_{ASmax}$  there are only very small numbers of these types of events.

## 6.0 Summary and Conclusions

This report presents the results of noise monitoring at a site in Cowden, Kent, between 2 July 2014 and 30 June 2016.

The site is approximately 15 km east of the airport. The NMT at Cowden is located in the edge of a field, which during the early part of the monitoring period contained crops, but then remained fallow, and there are no cattle, but occasional dog walkers. The site is out of earshot of the nearest main road but there is a drive (a private road), to a house, stables and business premises, which runs alongside the field (about 15 m away) along which there are occasional vehicles passing.

The report presents analysis and description of the following aspects of the noise data gathered during the noise monitoring programme: the number of aircraft noise events recorded by the noise monitor; the maximum noise levels of these aircraft noise events; the noise climate at the site, including average levels of aircraft noise, total and residual noise at the site; and the contribution of different types of aircraft to the aircraft noise level at the site.

The variation noise climate parameters (including total noise levels and aircraft noise levels) from hour to hour, between day to night, and from month to month have also been described.

The noise climate at the site has been placed into context by comparisons with the results of the 2000 National Noise Incidence Study, and with World Health Organisation Guidelines for Community Noise.

Aircraft overflying the site are mainly arrivals from the east and departures to the east. Some aircraft departing to the west on 'wrap-around' routes also overfly the site, but at much greater altitudes.

Most of the recorded aircraft noise events (56%) were due to aircraft arrivals, 40% were due to departing aircraft and about 6% were due to overflights; 93% of the aircraft noise events occurred during the daytime, and 7 % at night.

At this site the average level of noise from aircraft is much lower than that from residual noise from other sources.

A summary of the main noise related parameters for the site at Cowden is shown in the Table below:

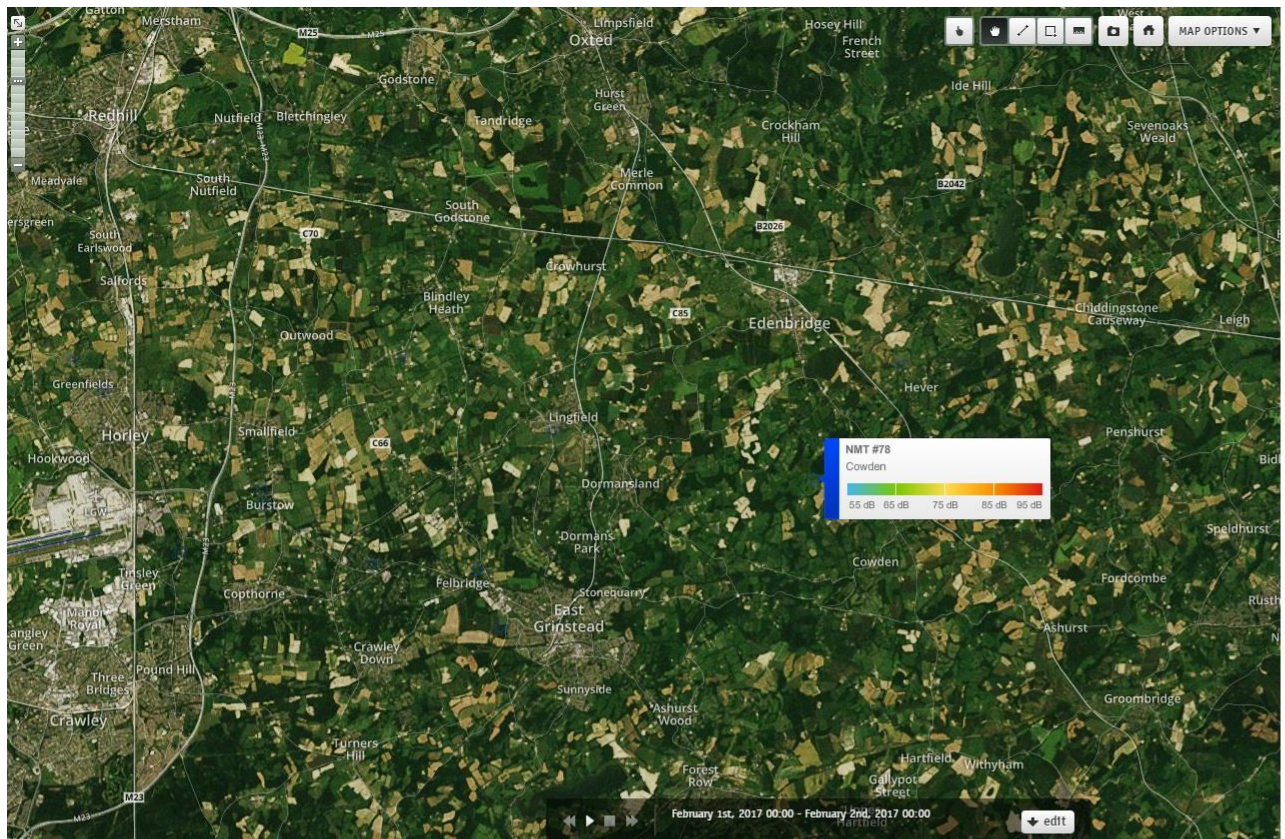
Survey period	July 2014 to June 2015	July 2015 to June 2016
Aircraft noise event trigger level	55 dBA for 10 seconds	55 dBA for 10 seconds
Length of noise monitoring period	12 months	12 months
Number of aircraft noise events (after removal of suspected overlong duration noise contaminated events)	29,816	30,660
% Arrivals and Departures	54 % Arrivals, 40 % Departures, 6 % overflights	
% DAY and NIGHT	93 % Day, 7 % Night	

Noise Climate at Cowden, July 2014 to June 2016

Average maximum noise level of aircraft noise events	61 dBA overall; Arrivals 60 dBA ; Departures 62 dBA; Overflights 60 dBA	
Average noise level and duration of aircraft noise events	57 dBA, 25 seconds	
Average total noise level	50 dBA (Day); 47 dBA (Night)	50 dBA (Day); 46 dBA (Night)
Average aircraft noise level	47 dBA (Day); 49 dBA (Night)	44 dBA (Day); 38 dBA (Night)
Average residual noise level	48 dBA (Day); 46 dBA (Night)	49 dBA (Day); 46 dBA (Night)
Background noise (L <sub>AS90</sub> )	36 dBA (Day); 30 dBA (Night)	39 dBA (Day); 31 dBA (Night)
Daytime level (12 hours)	50 dBA (Total noise); 49 dBA (aircraft noise)	50 dBA (Total noise); 46 dBA (aircraft noise)
Evening level (4 hours)	47dBA (Total noise); 44 dBA (aircraft noise)	47 dBA (Total noise); 43 dBA (aircraft noise)
Day-evening- night level	51 dBA (Total noise); 49 dBA (aircraft noise)	51 dBA (Total noise); 47 dBA (aircraft noise)

## Noise Climate at Cowden, July 2014 to June 2016

Figure 1: Map showing location of noise monitor at Cowden.



## Noise Climate at Cowden, July 2014 to June 2016

Figure 2A Location of Cowden NMT 78 showing typical westerly departure tracks (green) with typical arrivals tracks (red) also illustrated

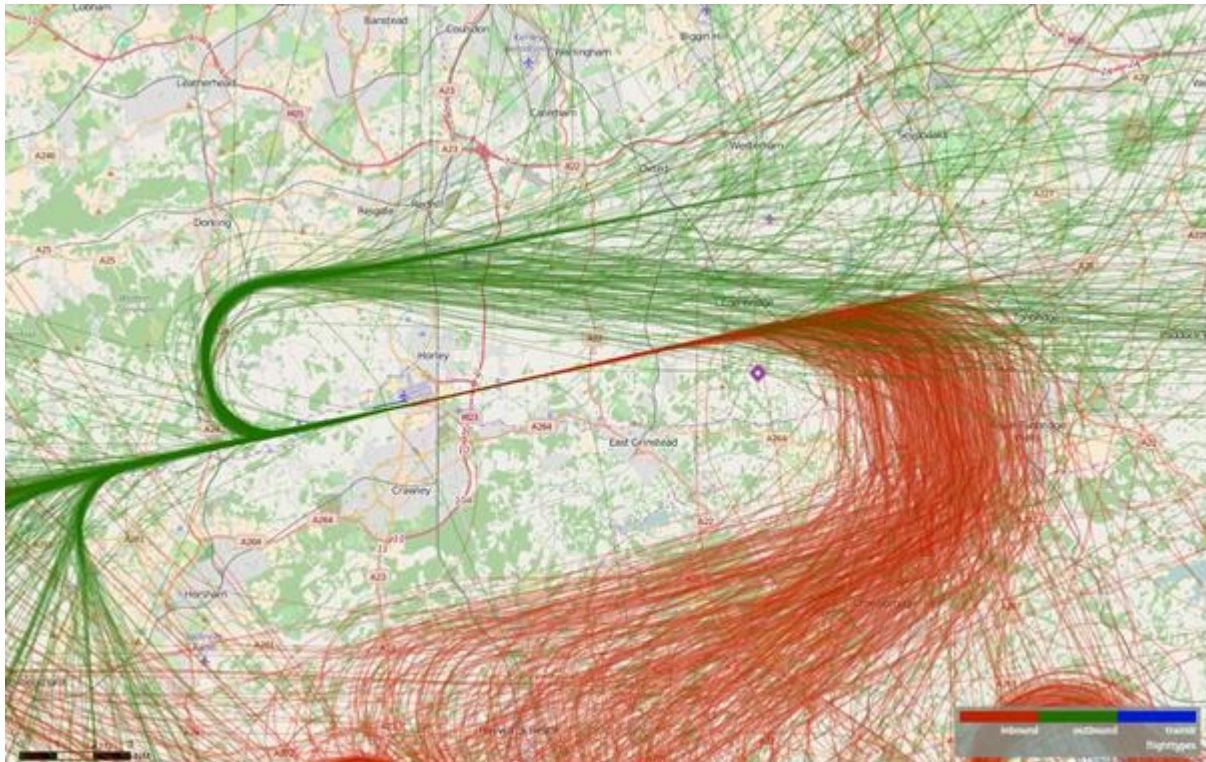
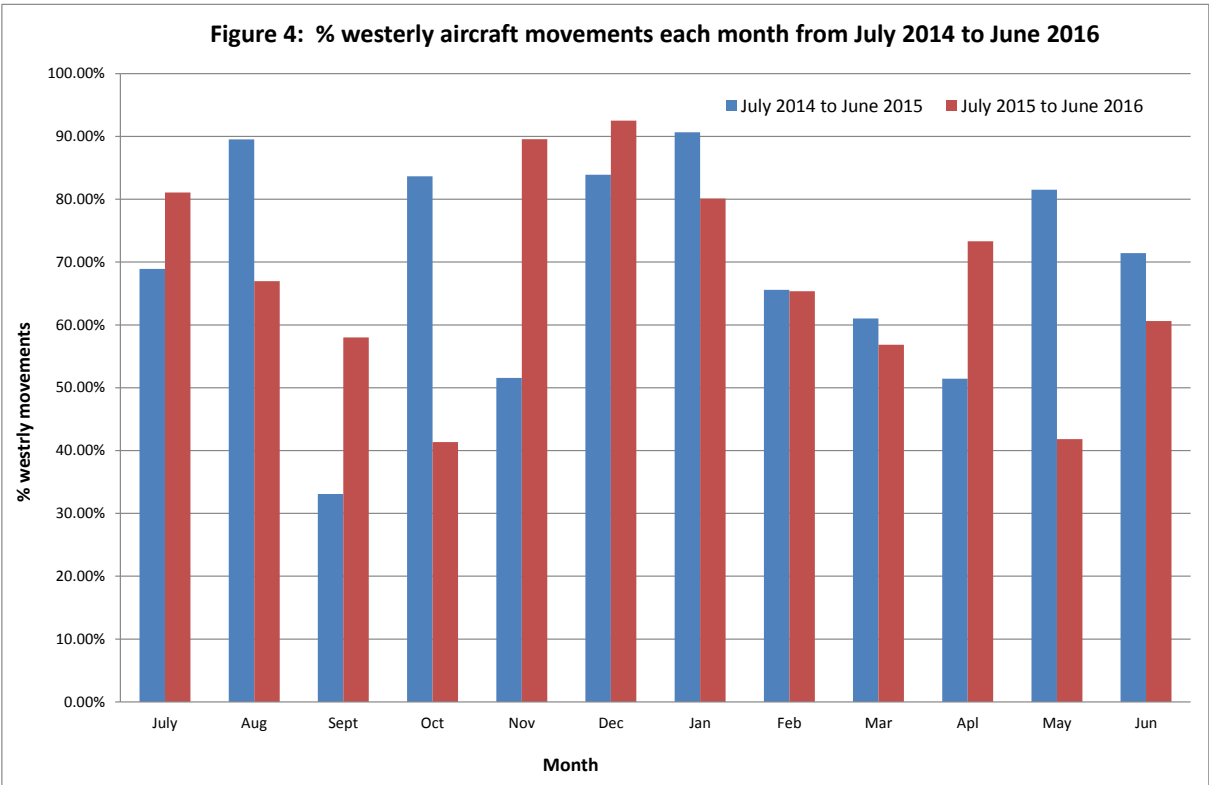


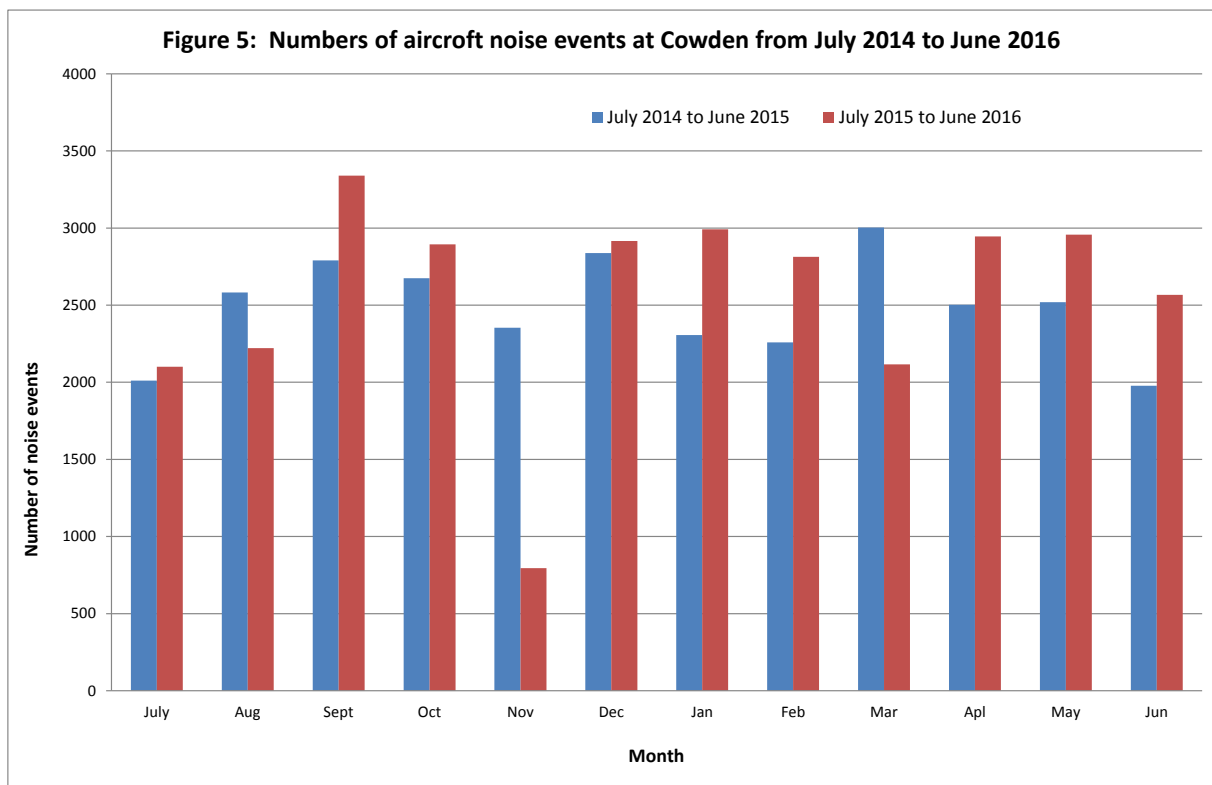
Figure 2B showing easterly departures and location of noise monitor at Cowden



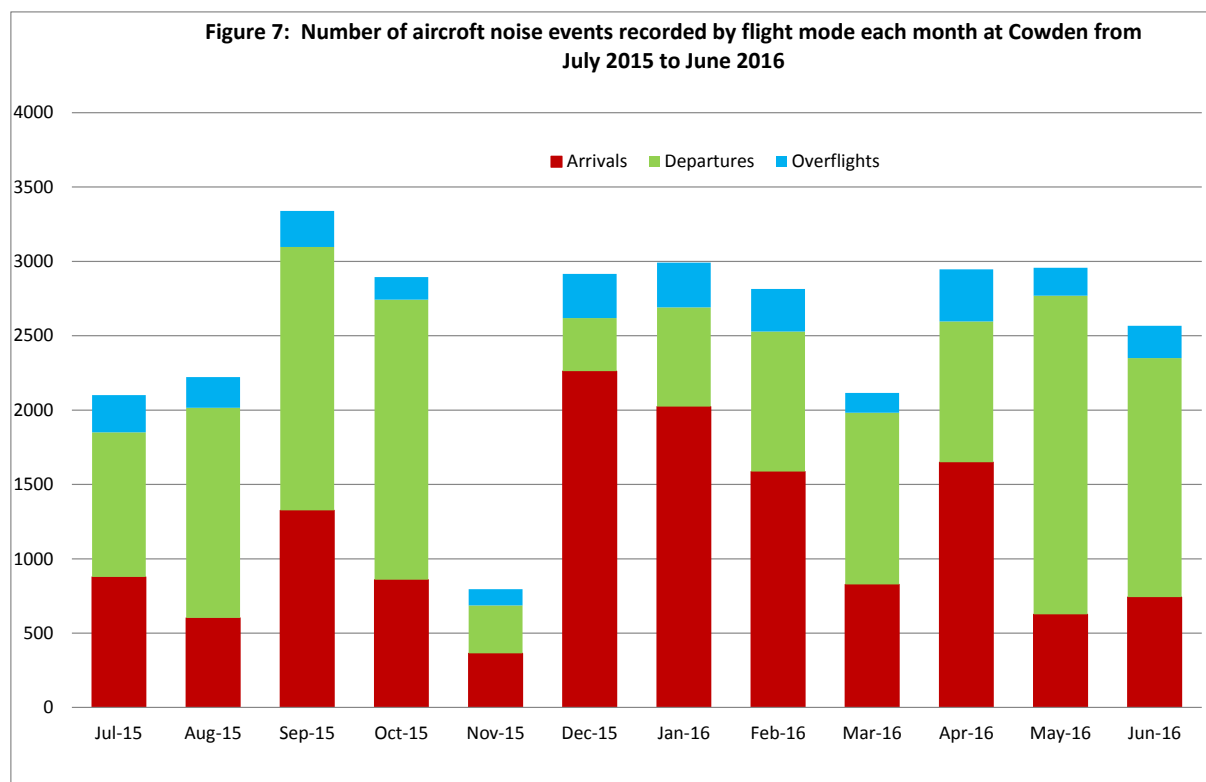
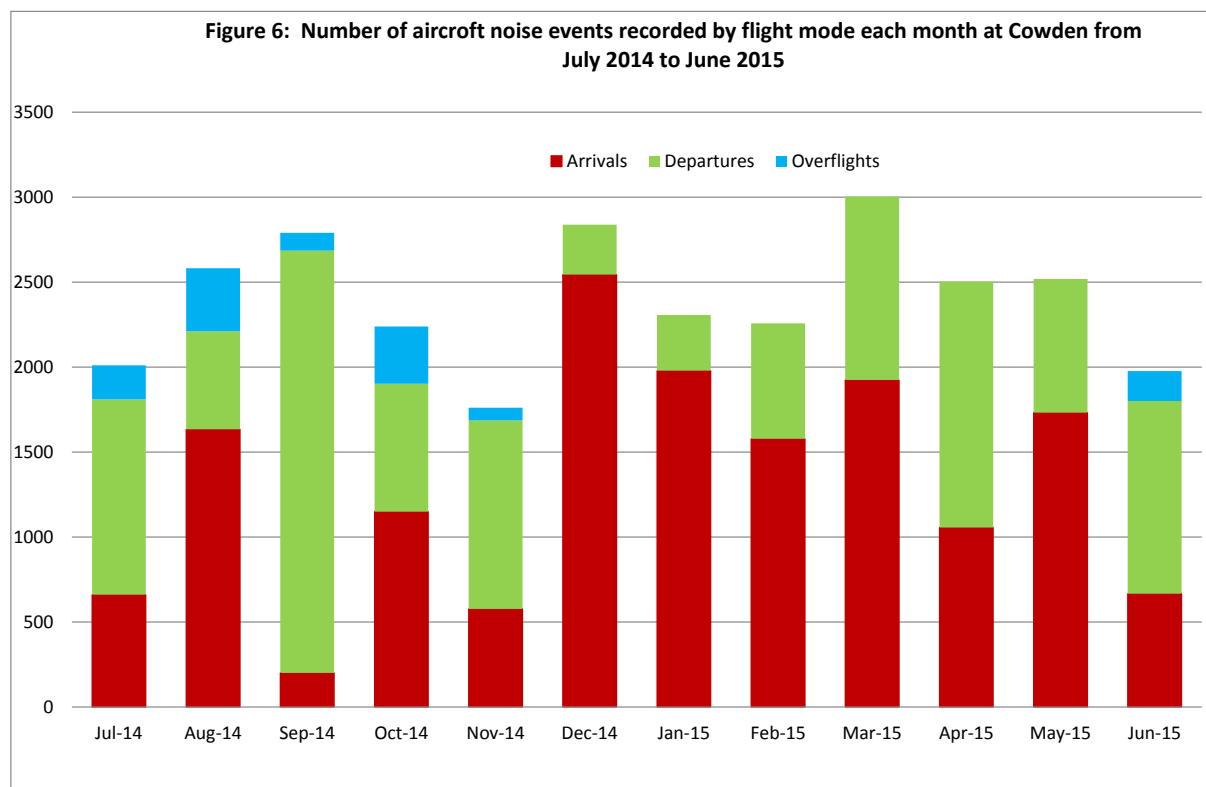
Noise Climate at Cowden, July 2014 to June 2016



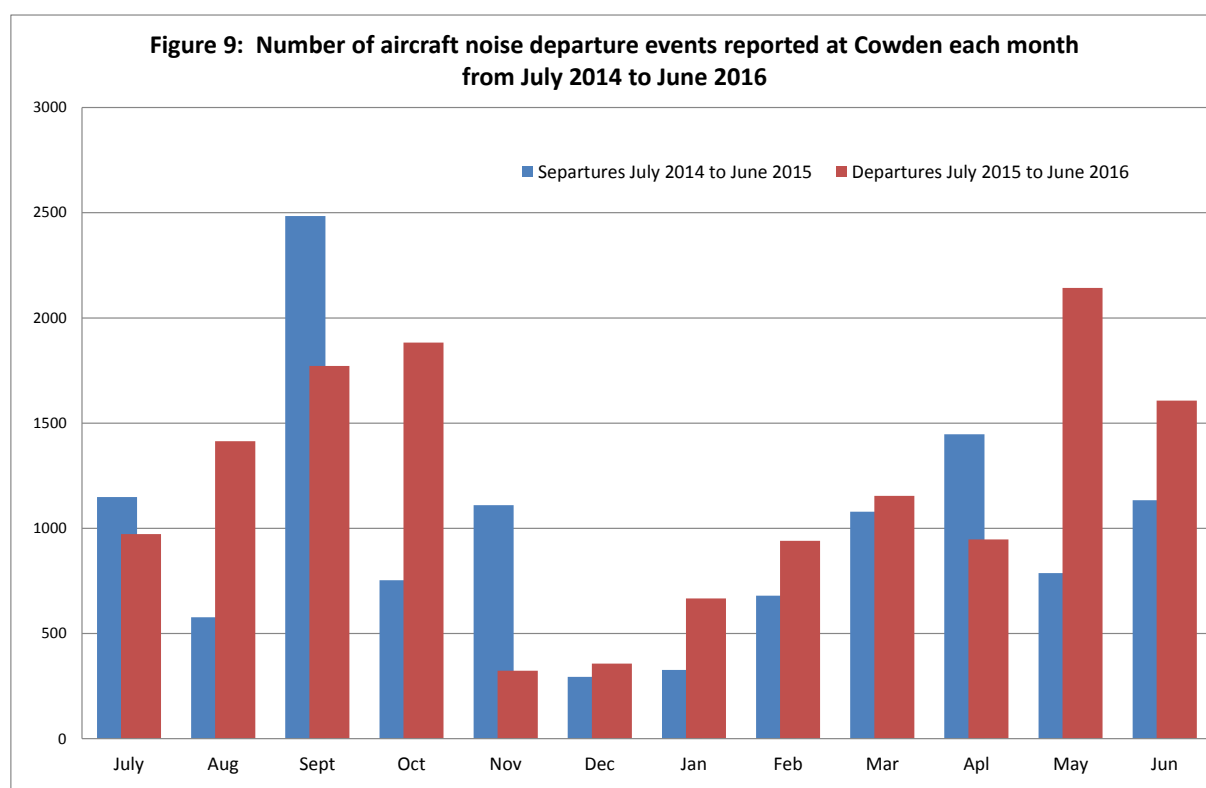
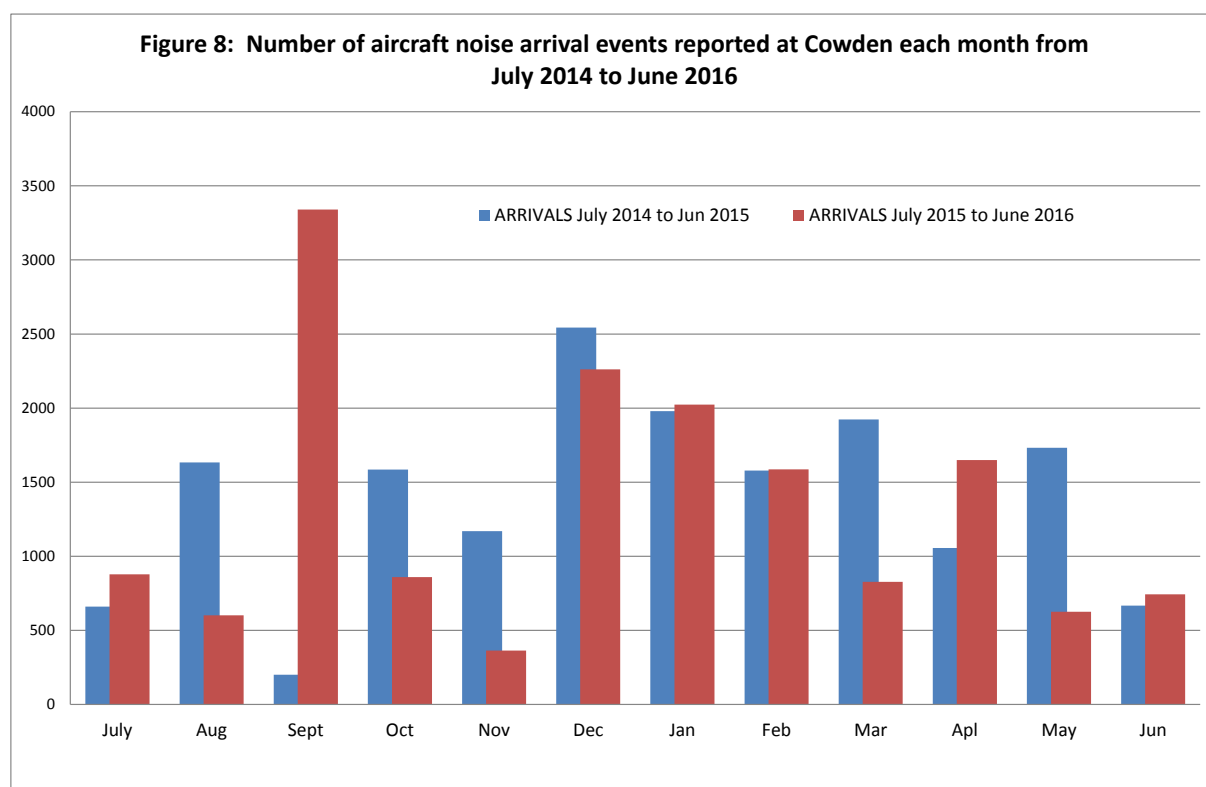
# Noise Climate at Cowden, July 2014 to June 2016



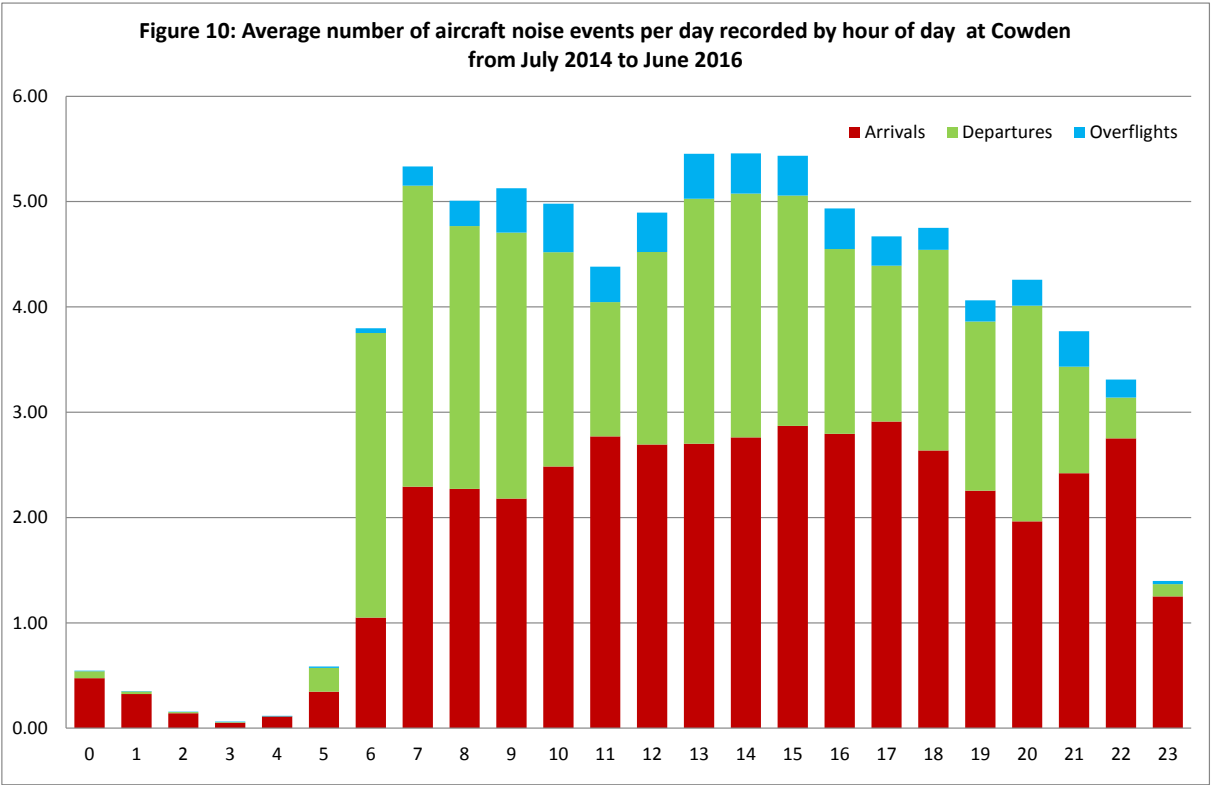
# Noise Climate at Cowden, July 2014 to June 2016



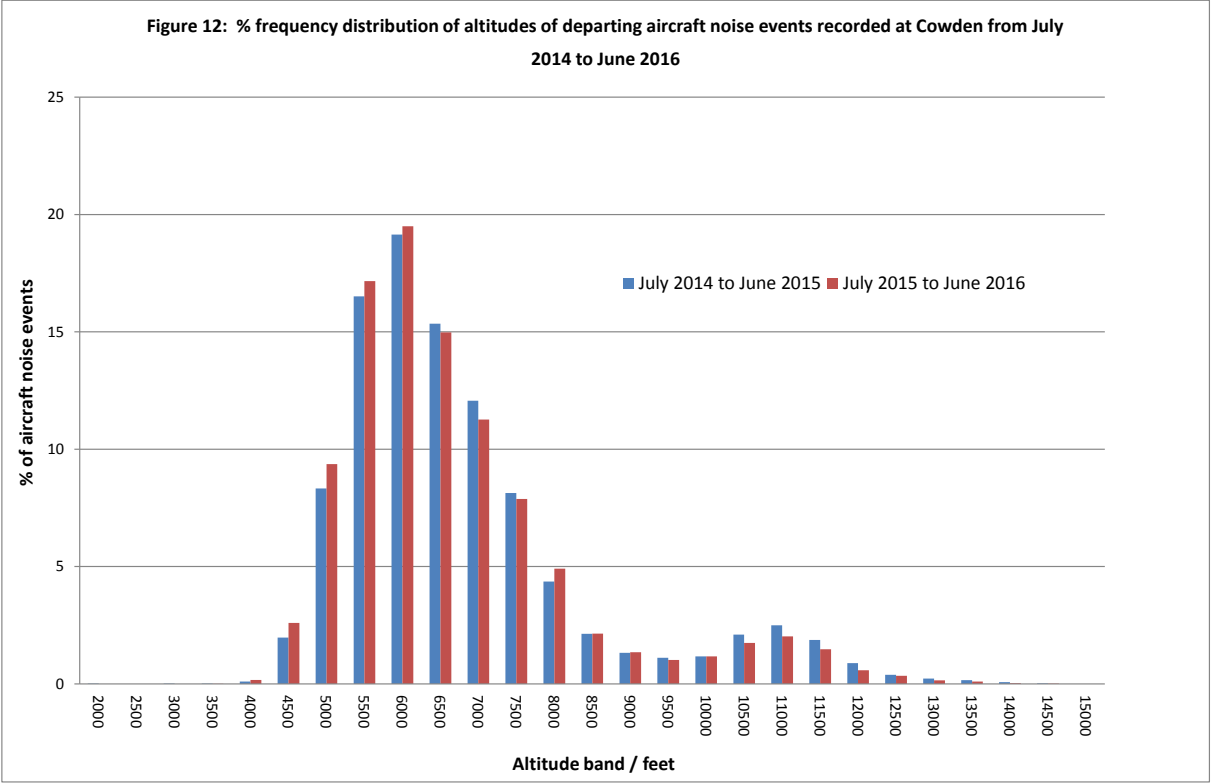
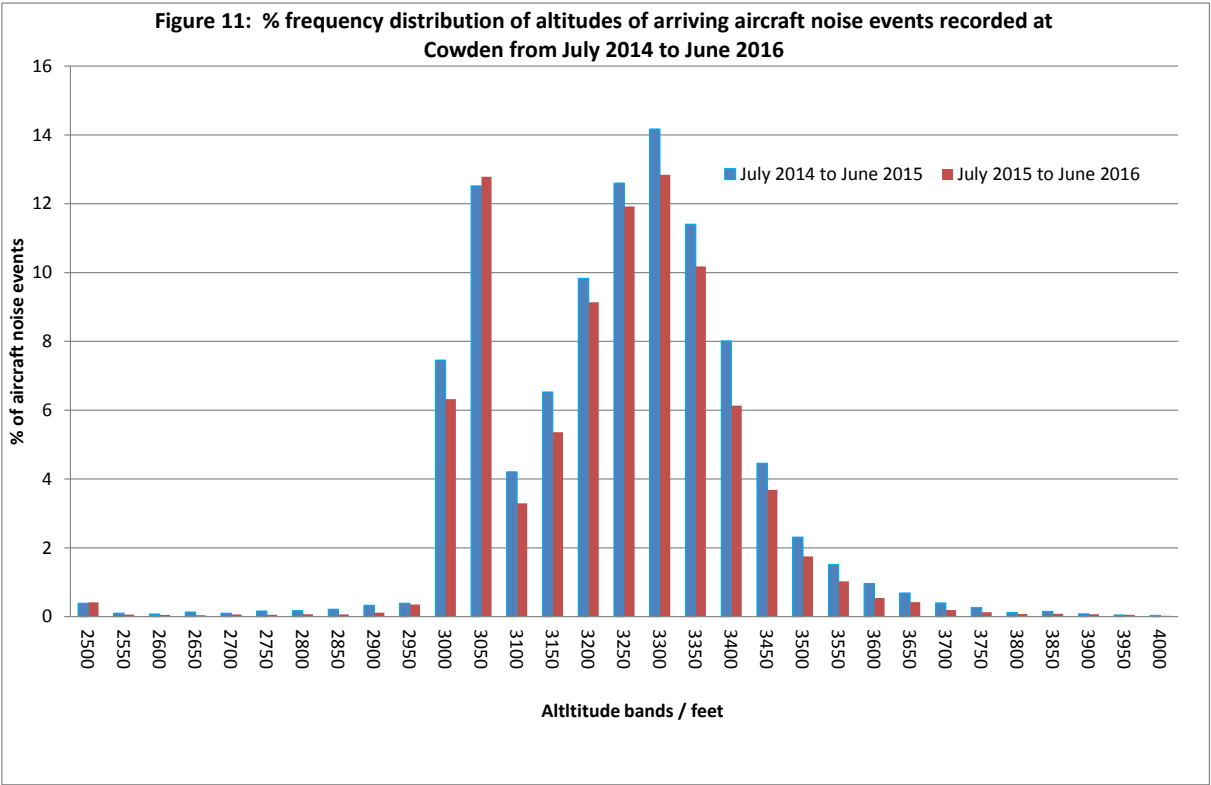
# Noise Climate at Cowden, July 2014 to June 2016



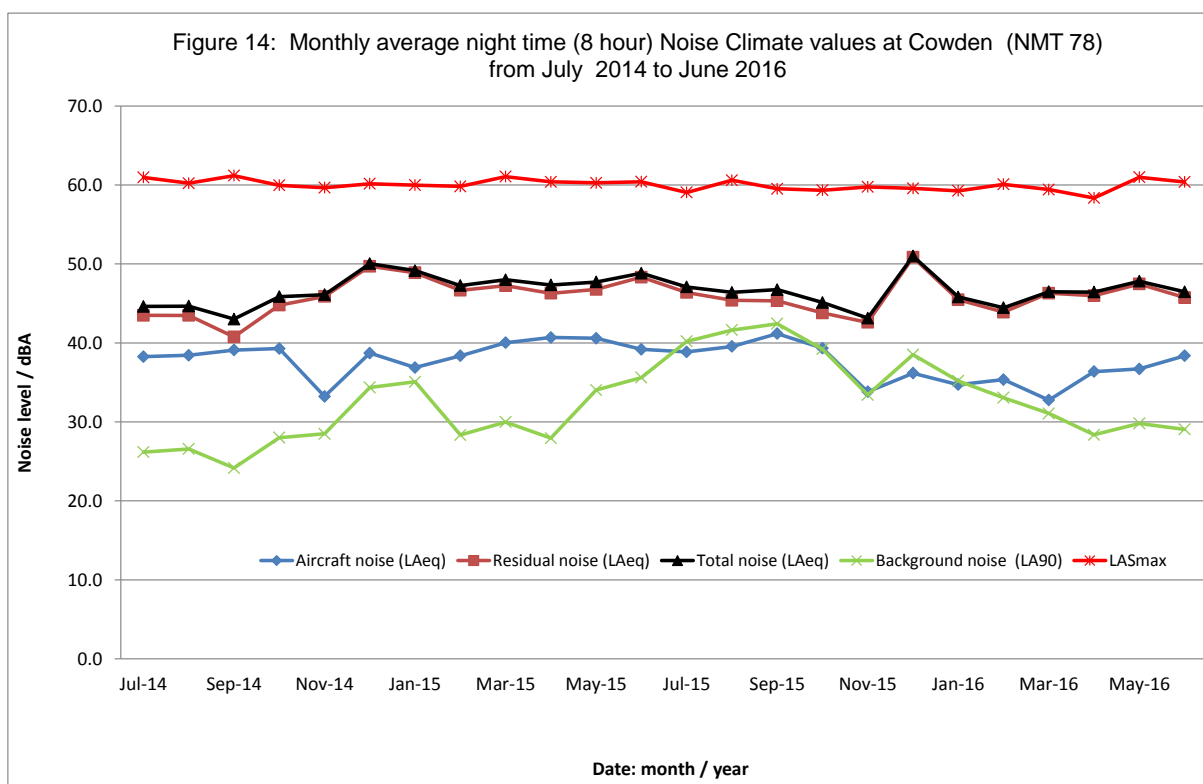
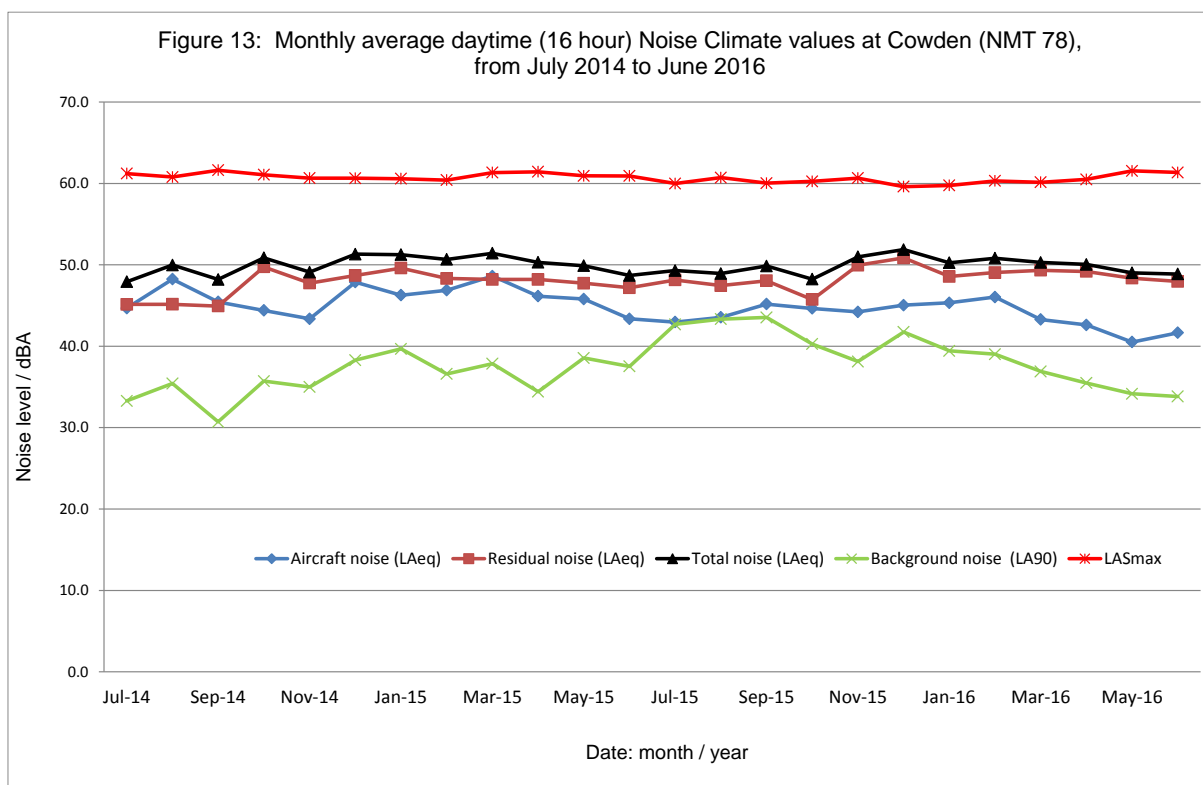
Noise Climate at Cowden, July 2014 to June 2016



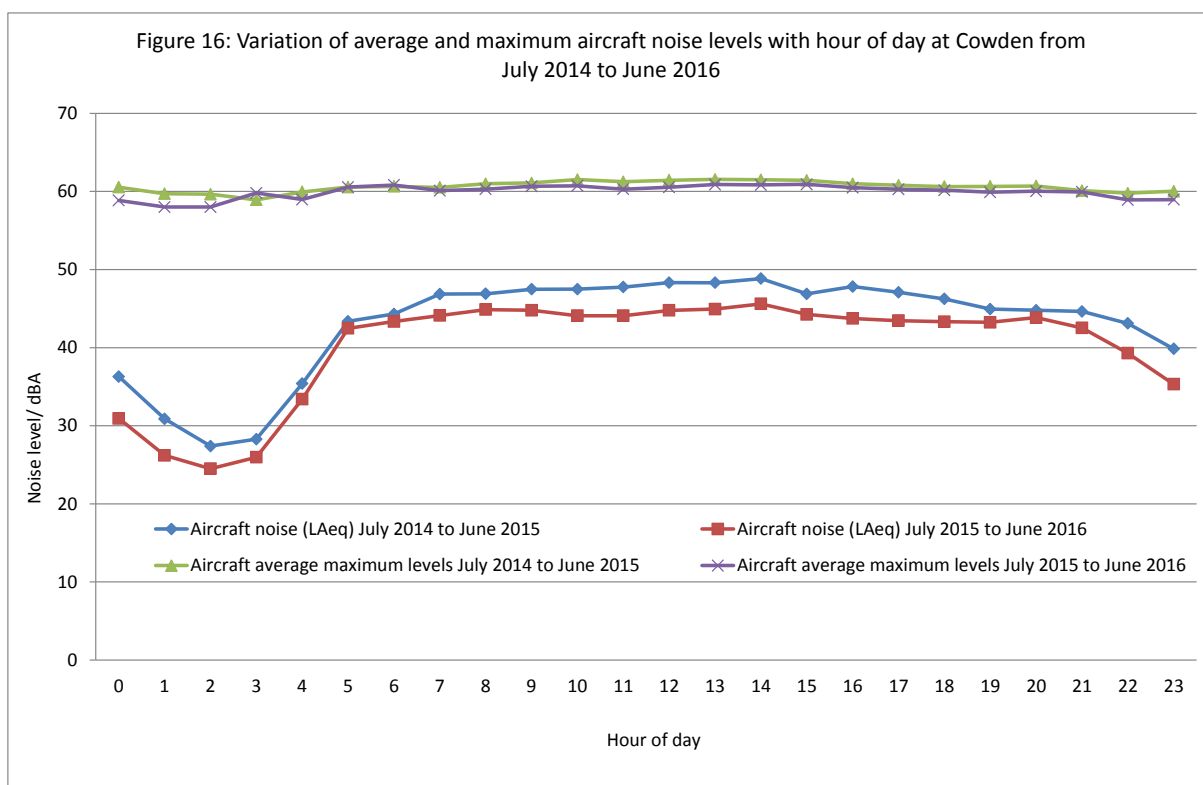
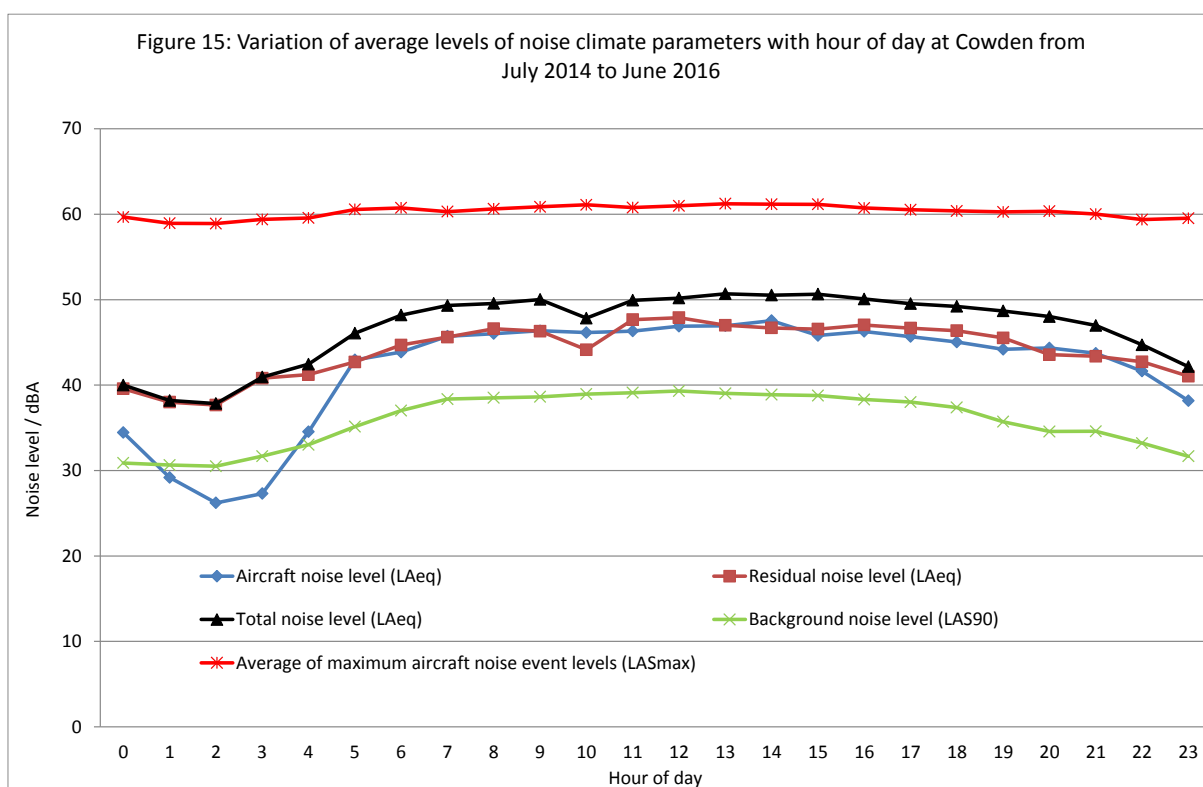
Noise Climate at Cowden, July 2014 to June 2016



# Noise Climate at Cowden, July 2014 to June 2016



# Noise Climate at Cowden, July 2014 to June 2016



# AAD

applied  
acoustic  
design

## APPENDIX 1

### DATA FROM THE NOISE MONITORING TERMINAL



THE GREEN BUSINESS CENTRE  
THE CAUSEWAY  
STAINES  
MIDDLESEX  
TW18 3AL

TELEPHONE: 01784 464404  
FACSIMILE: 01784 465447  
E MAIL: [mail@aad.co.uk](mailto:mail@aad.co.uk)

## Appendix 1

### Data from the Noise Monitoring Terminal

The NMT records all noise regardless of its source. It has, however, the facility to capture and show separately all noise events that meet particular pre-set conditions. This facility is used to capture noise events likely to arise from aircraft flying near to the monitor. The pre-set condition used for this study is that the noise must exceed a level of 55 dBA for a minimum duration of 10 seconds. This is arrived at following preliminary noise measurements at the site, and is broadly similar to conditions set for other such studies. It is of course likely that noise arising from activities other than aircraft using Gatwick Airport will occasionally cause noise events to be captured.

To determine which of all those events are due to aircraft using Gatwick Airport their 'noise to track' matching software compares all captured noise events with Gatwick Airport's air traffic radar tracks. Noise events that are matched to aircraft are combined to provide a measure of 'aircraft noise' and noise events that are not matched to aircraft are included with 'all other noise' (i.e. that noise which is not captured as noise events, because it fails to meet the capture conditions of being above 55 dBA for 10 seconds), and is called residual noise.

Therefore wherever reference is made to aircraft noise events within this document it should be understood that these relate only to aircraft using Gatwick airport. Any noise arising from aircraft travelling to or from any other airport will be included as residual noise.

The selection of the threshold conditions (noise level and time period) which trigger the capture of a noise event is a compromise judgement designed to include as much of the noise from passing aircraft as possible whilst at the same time excluding, as far as possible, noise from other sources. For this survey a threshold trigger level 55 dBA for a duration of at least 10 seconds was used.

The following information is recorded for each noise event: date, time, duration, maximum noise level ( $L_{ASmax}$ ) and SEL values, and, in addition, for aircraft noise events, event type (arrival/departure), departure route, runway used, and aircraft type.

In addition to gathering data about noise events the NMT also collects and stores information on an hourly basis about the total level of noise at the site from all sources (including that from aircraft movements), including individual noise events.

Because the noise level is usually not constant, but varies continuously throughout each hour it is necessary to describe the total noise level statistically in terms of a measure of the average noise level throughout the hour (and called the hourly continuous equivalent noise level,  $L_{Aeq}$ ) and also in terms of a series of hourly percentile levels. The most important of these is the  $L_{AS90}$ , which is the noise level exceeded for 90% of each hour. This level of noise is conventionally taken to be a measure of the background noise level for each hour, and is the more or less constant level of noise which underlies the variations caused by various transient sources including aircraft.

By using the Single Event Noise Level (SEL) for each aircraft noise event it is possible to calculate the average, or equivalent aircraft noise level ( $L_{Aeq}$ ) due to aircraft noise events over a period of time (hour, day or month). Although this average noise level

bears little relationship to the aircraft noise as heard, which occurs in short bursts of noise at higher levels rather than as a lower continuous average level, it is, nevertheless, a useful parameter for comparative purposes, and is an internationally agreed parameter for the measurement of environmental noise, including aircraft noise.

#### Residual noise levels

Since the NMT also records hourly  $L_{Aeq}$  values of the total noise from the site it is possible, by subtracting the aircraft noise level from the total noise level (using the decibel (or logarithmic) subtraction process which is appropriate in this case) to calculate the remaining component of the total noise, i.e. the residual noise level.

The residual noise is a combination of the noise from residual noise events (i.e. those captured noise events which did not match with aircraft movements) and from other residual noise, not captured as noise events, i.e. all other noise recorded by the monitor that did not exceed the trigger level for the required minimum time period.

It is therefore possible that the residual noise could also include some noise from aircraft arriving at, or departing from Gatwick, as well as from overflights, which was below the trigger level. Conversely it will sometimes be possible that some non-aircraft noise, i.e. residual noise might be captured as part of aircraft noise event. This could happen for example if a burst of residual noise occurred at the same time as an aircraft was passing overhead.

The first possibility, i.e. residual noise being counted as aircraft noise will lead to an increase in reported residual noise levels, and the second possibility, i.e. of residual noise being counted as aircraft noise, will lead to an increase in reported levels of aircraft noise level. Previous investigations have shown that in both cases these effects on the reported levels are small, and not considered to be significant, and are incorporated within the levels of uncertainty reported below.

#### Combined Uncertainty

This report includes results from calculations made using average noise measurement values from the 12 month monitoring period of aircraft noise level ( $L_{Aeq,T}$ ), total noise level ( $L_{Aeq,T}$ ), residual noise level ( $L_{Aeq,T}$ ), background noise level ( $L_{AS90}$ ) and maximum noise level (of aircraft noise events),  $L_{ASmax}$ .

Taking into account all the causes of variability that affect the values of these parameters, including, for example: weather conditions affecting sound propagation, variability of the noise emission and flight tracks of individual aircraft noise events, the accuracy of the noise level measurements produced by the NMT, it is considered that the estimated combined uncertainty is +/- 2 dB.

## APPENDIX 2

### GLOSSARY OF ACOUSTIC TERMS



THE GREEN BUSINESS CENTRE  
THE CAUSEWAY  
STAINES  
MIDDLESEX  
TW18 3AL

TELEPHONE: 01784 464404  
FACSIMILE: 01784 465447  
E MAIL: [mail@aad.co.uk](mailto:mail@aad.co.uk)

## GLOSSARY OF TERMS

This glossary is presented in two parts. The first part contains definitions relating specifically to the context of this report, followed, in the second part, by a more general glossary of acoustic terms.

### Definitions relating specifically to the context of this Report:

**ADNID** is a SID (Standard Instrument Departure) technical departure route trial which diverges left of the runway centreline by 21 degrees after only 1.6nm whereas the R-NAV (Radio Navigation) BOGNA SID maintains the runway centreline for 8.1nm before tracking to the south.

### Aircraft noise contours

Two types of aircraft noise contours have been produced; those based on the average daytime aircraft noise levels ( $L_{Aeq16hour}$ ), and those based on the  $L_{den}$  parameter, introduced for noise mapping purposes

$L_{Aeq16hour}$  aircraft noise contours have been produced annually and displayed on the Defra website for many years (approximately since 1990, when they replaced NNI contours) for various UK airports, including Heathrow, Gatwick and Edinburgh. The latest contours which are available are for the year 2010.

### $L_{den}$ contours

The 24 hour day-evening-night noise index ( $L_{den}$ ) has been introduced by the EU for noise mapping purposes. This index is based on average levels of aircraft noise ( $L_{Aeq}$  values) throughout the day but with a weighting penalty of 5 dB applied to noise in the evening (19.00 hours to 23.00 hours) and a 10 dB penalty at night-time (23.00 hours to 07.00 hours).

All UK airports have been required to produce Action Plans based on  $L_{den}$  aircraft noise contours as part of the Noise mapping exercise. Accordingly contours of  $L_{den}$  were produced for the year 2006 (ERCD Report 0708) to meet the requirements of the first round noise mapping exercise Under EU Directive 2002/49/EC.  $L_{night}$  ( $L_{Aeq,8hour}$ ),  $L_{day}$  and  $L_{evening}$  contours were also produced as part of this exercise.

The  $L_{Aeq16hour}$  contours are based on the average summer day, where 'summer' is the 92-day period from 16 June to 15 September, and 'day' is the 16-hour period 0700-2300 (local time). They are produced in 3 dB steps from 57 dBA to 72 dBA. The 2006  $L_{den}$  contours were produced in 5 dB steps with the lowest (outermost contour) being for  $L_{den}$  of 55 dBA and were based on data for an average day over the whole year (2006).

**Aircraft Noise events** Noise events which have been matched by the airport's noise and track keeping system to radar tracks in the vicinity of the NMT from aircraft arriving at or departing from Gatwick airport.

## Noise Climate at Cowden, July 2014 to June 2016

---

**Aircraft noise level** The average noise level derived from aircraft noise events, aggregated into hourly, daily or monthly average (LAeq) values.

**ANOMS/ Casper BV** Airport Noise and Operations Monitoring System. The software data analysis system (incorporating the NTK system) which was in use at the airport until March 2013. The ANOMS system has been replaced by the Casper BV noise and track keeping system, which came into operation on 1 April 2013.

### Applied Acoustic Design (AAD)

Acoustic consultants retained by Gatwick Airport Ltd.

**Average L<sub>ASmax</sub> level** The arithmetic average of the L<sub>ASmax</sub> values of all the events (of a particular type i.e. either aircraft noise or community noise) which occur over a particular period of time (eg hour, day or month).

### Building Research Establishment

A former government organisation, now privately owned, which conducts research on noise. Carried out the National Noise Incidence Study for Defra in 2000.

**Defra** UK government Department for Environment Food and Rural Affairs, which has responsibility for aspects of policy relating to environmental noise

### Flight Performance Team

The unit within Gatwick Airport which monitors all aircraft movements to ensure compliance with Department for Transport noise regulations relating to track keeping, noise abatement and night flights, and which also provides a means of investigating and responding to complaints and enquiries from the public.

### Instrument Landing System (ILS)

An instrument landing system (ILS) is a ground-based instrument approach system that provides precision guidance to an aircraft approaching and landing on a runway, using a combination of radio signals and, in many cases, high-intensity lighting arrays to enable a safe landing during instrument meteorological conditions, such as low ceilings or reduced visibility due to fog, rain, or blowing snow. The standard glide-slope path is 3° downhill to the approach-end of the runway.

### National Noise Incidence Study 2000

A study carried out by the Building Research Establishment for Defra based on a survey of noise levels outside 1020 dwellings in England and Wales in 2000, and extended to the whole of the UK in 2001, giving proportions of the population exposed to various levels of environmental noise.

A second National Noise Incidence study was carried out in 2000. A comparison of the data from the two studies indicated that although there were some changes, much about the noise climate in England and Wales had not changed significantly over the 10 year period. Therefore the 2000 study remains a good basis for setting the noise levels from this study at Leigh into a wider context.

#### National Planning Policy Framework

On 27th March 2012 the National Planning Policy Framework replaced all previous planning guidance including PPG24 (see below). However Local Authorities which have an adopted Core Strategy, which refers to PPG24, have 12 months to incorporate guidance on transport noise into their Core Strategy and during those 12 months it is generally considered that PPG24 can still be relied upon as the main guidance for transport related noise issues.

#### Noise event

A burst of noise at a high level which satisfies the noise event capture conditions for a particular NMT, i.e. which exceeds the pre-set trigger noise level (in this report 55 dBA) for a pre-set time interval (in this report 10 seconds).

Noise events are detected, captured and stored by the NMT, and following subsequent processing by the NTK system are classified in this report as either aircraft noise events or community noise events

#### Noise Monitoring Terminal (NMT)

The noise measurement and analysis system installed at each site consisting of a precision grade sound level meter (Larson Davis type 870) inside a weather proof and tamper proof metal cabinet connected to an outdoor microphone located at a height of approximately 3.5 m above ground level.

#### NTK system Noise and Track Keeping system.

A software system able to match noise events recorded by the NMTs with aircraft tracks.

#### PPG24 Planning Policy Guidance Note 24:Planning and Noise

A document issued by the UK government Department for the Environment in 1994 which gives guidance to local authorities and others on noise and planning.

On 27th March 2012 the National Planning Policy Framework (see above) replaced all previous planning guidance including PPG24..

#### Residual noise

All noise arriving at the NMT microphone apart from aircraft noise events, i.e. comprising residual noise events and all other noise which does not satisfy the trigger conditions for capture as a noise event.

## Residual Noise events

Those noise events which have not been matched by the NTK system to aircraft tracks using Gatwick Airport in the vicinity of the NMT.

## Statistical frequency Analysis (of $L_{ASmax}$ noise levels)

An analysis of a group of  $L_{ASmax}$  values giving the numbers of events (or percentages of total numbers) at different dBA levels

**Total noise** All noise arriving at the NMT microphone, i.e. not only including all noise events (both aircraft and residual) but also all other noise which does not satisfy the trigger conditions for capture as a noise event.

**Total noise level** The average or continuous equivalent level ( $L_{Aeq}$ ) of the total noise at the site, recorded each hour by the NMT, which may also be aggregated into daily or monthly values.

**Total noise climate** The level of the total noise at the NMT microphone varies with time. Over a particular period of time e.g. one hour, this variation may be described in terms of a number of different noise indices including the average or equivalent noise level, maximum and minimum noise level values and various percentile levels.

Such a description constitutes the noise climate at the site over that period of time.

The NMT records the following total noise indices every hour:  
 $L_{Aeq}$ ,  $L_{ASmax}$ ,  $L_{AS10}$ ,  $L_{AS50}$ ,  $L_{AS90}$  and  $L_{AS99}$ .

## World Health Organisation (WHO)

Issued 'Guidelines for Community Noise' in 2000.

## A general Glossary of acoustic Terms:

**A-weighting** A method of producing a single figure measure of a broad band noise (as opposed to the 8 or 9 figures which make up an octave band spectrum) which takes into account, in an approximate way at least, the frequency response of the human hearing system. The idea is that sound levels measured in this way should give an indication of the loudness of the sound.

## A-weighted sound pressure level (dBA).

The value of the sound pressure level, in decibels, measured using an A-weighting electronic circuit built into the sound level meter. The vast majority of noise measurements are carried out in this way.

Day, evening, night level,  $L_{den}$

An index of environmental noise based on average noise levels ( $L_{Aeq}$ ) throughout the 24 hour period, but with a weighting factor of 5 dBA added to evening noise levels (19.00 to 23.00 hours), and a weighting of 10 dB added to night-time noise levels (23.00 to 07.00 hours). It is the noise index used in the UK Noise mapping exercise commissioned by Defra in response to the European Union Directive on Environmental Noise in 2002.

Decibel scale

The decibel scale is the scale on which sound pressure levels are commonly measured. It is a logarithmic scale and is used for convenience to compress the audible range of sound pressures into a manageable range, from 0 dB to 140 dB. The zero of the scale, 0 dB, corresponds to the notional threshold of hearing, 0.00002 Pa, and the upper limit, 140 dB, corresponds to 20 Pa, which would cause immediate damage to the ear.

Equivalent continuous sound level ( $L_{Aeq,T}$ ), also called the Average noise level.

The  $L_{Aeq,T}$  represents a measure of the 'average' sound level over the measurement period. It corresponds to the steady continuous level of sound which, over the same period of time,  $T$ , would contain the same amount of (A-weighted) sound energy as the time varying noise. This is the most common method of measuring time varying noise, and within certain limits gives the best correlation with human response to noise, for example with annoyance.

Frequency

The frequency of a musical note is what gives it its pitch. It is the number of cycles of the fluctuating sound pressure which occur each second, and is measured in cycles per second, Hertz (Hz). The human ear can detect frequencies in the range 20 to 20000 Hz.

Most noises are a mixture of all frequencies, called broad-band noise.

$L_{AS90,T}$

This is the most commonly used of many possible statistical measures of a time varying noise. It is the 90<sup>th</sup> percentile of the statistical noise level distribution, or, more simply, the noise level that is exceeded for 90% of the measurement time ( $T$ ). Thus over one hour for example it represents the noise level which is exceeded for all but (the quietest) six minutes of that hour.

It is commonly used as a measure of the background noise in any given situation, against which the level of any new, potentially intrusive source of noise is often compared. Background noise itself often varies with time and so the  $L_{A90,T}$  is almost universally used as the best measure of the 'more or less always present' noise level which underlies short term variations from other sources of noise.

Although it is more usual to measure  $LA_{90}$  using the F weighting, the Slow weighting has been used for the data in this report, i.e.  $L_{AS90}$ . It is not considered that the use of the S weighting will make any

significant difference to the LA90 values in this case. (See under Time Weighting, Fast(F) and Slow(S)) below.

#### Maximum sound pressure level ( $L_{ASmax,T}$ )

This is the highest value of the time weighted sound pressure level, (measured using the A frequency weighting and the Slow time weighting) which occurred during the measurement period, T. It is commonly used to measure the effect of very short duration bursts of noise, such as for example sudden bangs, shouts, car horns, emergency sirens etc. which audibly stand out from the general level of, say, traffic noise, but because of their very short duration, maybe only a very small fraction of a second, may not have any effect on the  $L_{Aeq,T}$  value.

In the context of this report the  $L_{ASmax}$  value for each aircraft noise event and community noise event is monitored

In this report, in line with standard practice for aircraft noise measurement, the Slow (S) time weighting has been used for measurement of maximum levels of aircraft noise, hence reference is made to  $L_{ASmax}$ . (See under Time Weighting, Fast(F) and Slow(S)) below.

Noise Unwanted sound

Octave band spectra In order to investigate the frequency content of broad band sounds, called its frequency spectrum, measurements of sound pressure are carried out over a range of frequency bands. The most common method is to split the audio frequency range into 8 or 9 octave bands. An octave is a frequency range from one particular frequency to double that frequency.

Octave band measurements are not referred to in this report.

#### Percentile noise level, ( $L_{ASN}$ , where N is a number between 0 and 100)

The noise level which is exceeded for N% of the measurement period. For example, a value of  $L_{A10,1hour}$  of 57 dBA means that in that hour the noise level was at or above 57 dBA for 6 minutes (i.e. 10% of an hour), or alternatively, was at or below 57 dBA for 54 minutes.

#### Sound exposure level (SEL)

This is a measure of the A-weighted sound energy used to describe single noise events such as the passing of a train or aircraft; it is the A-weighted sound pressure level which, if occurring over a period of one second, would contain the same amount of A-weighted sound energy as the event.

SEL values for events may be used to calculate the average noise level over a period of time (hour, day or month)

**Sound pressure**      sound is a disturbance or fluctuation in air pressure, and sound pressure, measured in Pascals (Pa), is used as a measure of the magnitude of the sound. The human ear can detect sound pressures in the range from 0.00002 Pa to 20 Pa. This is an enormously wide range and so for convenience sound pressures are commonly measured on a decibel (dB) scale.

**Time varying noise**      When the level of noise varies with time, as is often the case, for example with noise from road traffic, various measures or noise indices as they are called are used to give a single figure description of the noise over a given period of time. The three most commonly used noise indices are the  $L_{Aeq,T}$ , the  $L_{A90,T}$  and the  $L_{Amax,T}$  values.

In all three cases the 'L' stands for the level of the sound in decibels, the 'A' for the fact that it is the A- weighted value, and the 'T' for the time period over which the noise is measured, for example 5min, 1 hour, 24 hour etc.

**Time weighting (Fast (F) and Slow (S))**

An exponential function of time, of a specified time constant, that weights the square of the instantaneous sound pressure. (Defined in BS EN 61672 – 1:2003).

There are two time constants defined in BS EN 61672 – 1:2003, designated Fast (F) and Slow (S), and noise indices such as the maximum, or percentile noise levels which are based on instantaneous time-weighted sound pressure should indicate which time weighting has been used in the measurement.

In this report, in line with standard practice for aircraft noise measurement, the Slow (S) time weighting has been used for measurement of maximum levels of aircraft noise, hence reference is made to  $L_{ASmax}$ . Because the sound level meter cannot measure using both Fast and Slow weightings simultaneously this necessarily means that the 90th percentile values have also been measured using the S weighting, hence reference is made to  $L_{AS90}$ . Although it is more usual to measure  $L_{A90}$  using the F weighting, it is not considered that the use of the S weighting will make any significant difference to the  $L_{A90}$  values in this case.